

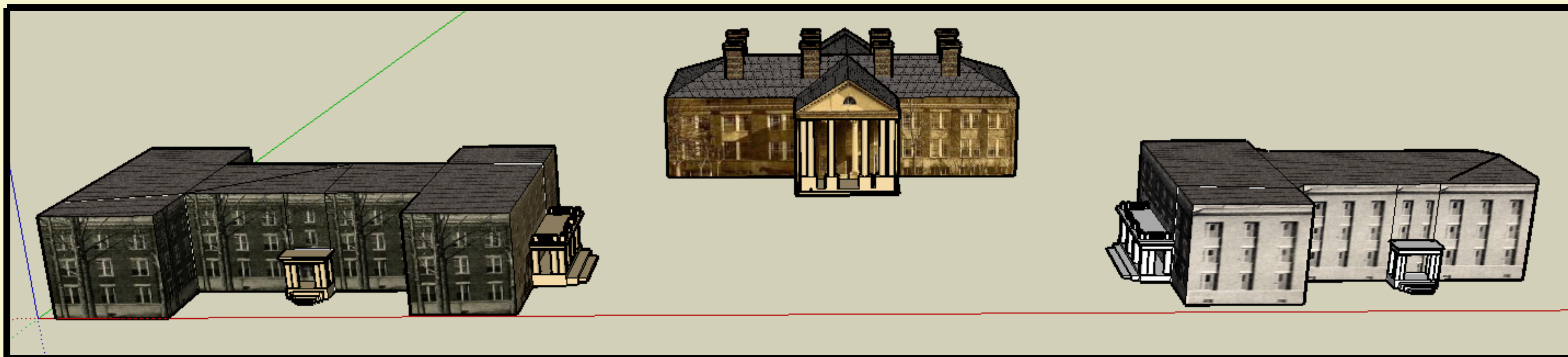
# Traveling Through Time

The Early Years of UMW

1908—1925

## Making the Model

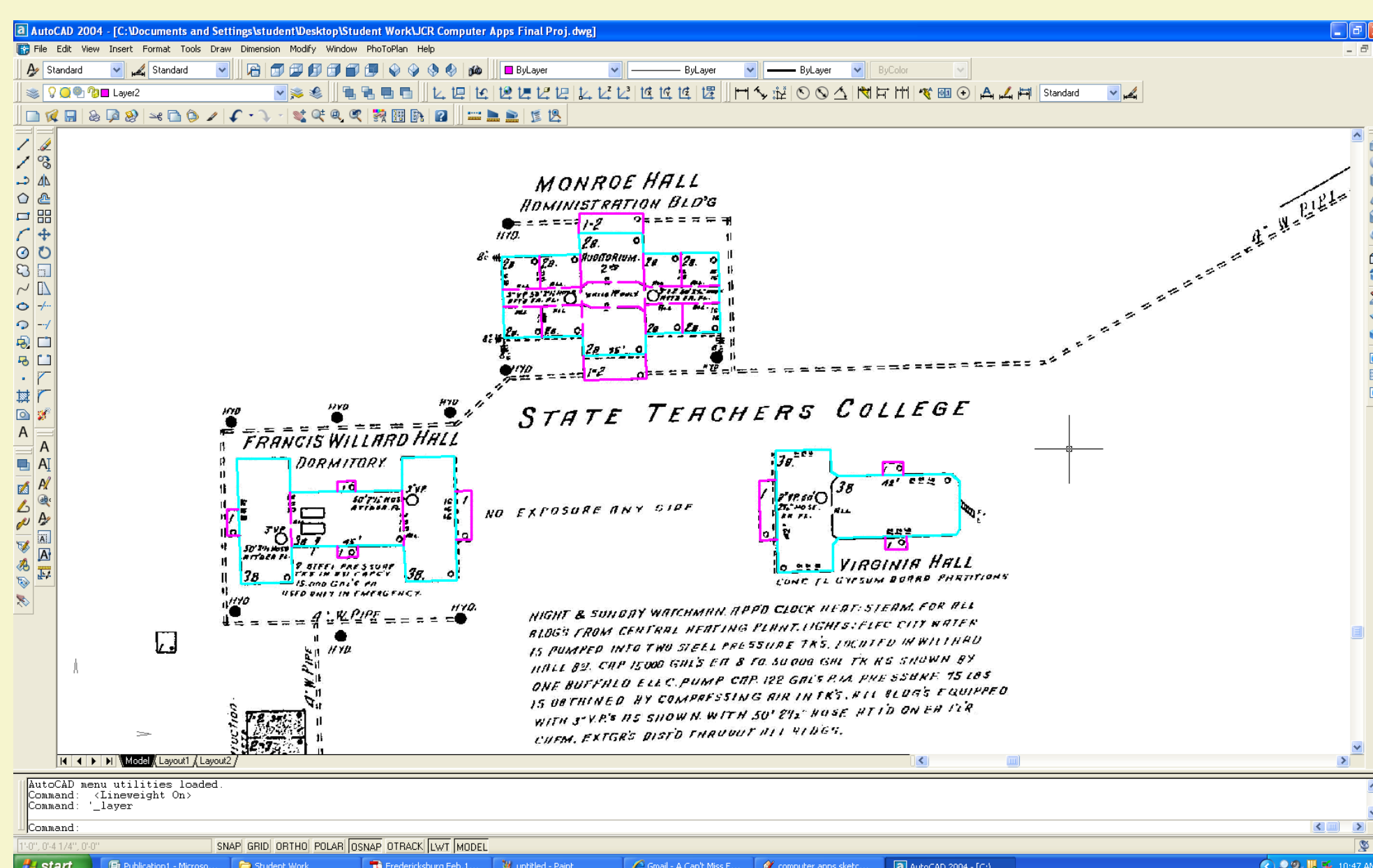
By Justine Rothbart



### Project Summary

We created a 3-D model of the UMW campus from 1908 to 1925. The purpose was to make the historical photographs of the early days of UMW come to life. Our final product was an animation of the 3-D model inserted into a movie format.

In Google SketchUp, we first created the basic form of the buildings and then added texture to the exterior walls. Most of the textures are from historic photographs found either in the UMW Yearbook, *The Battlefield*, or from the Special Collections in Simpson Library.



### 1927 Sanborne Map inserted into AutoCAD

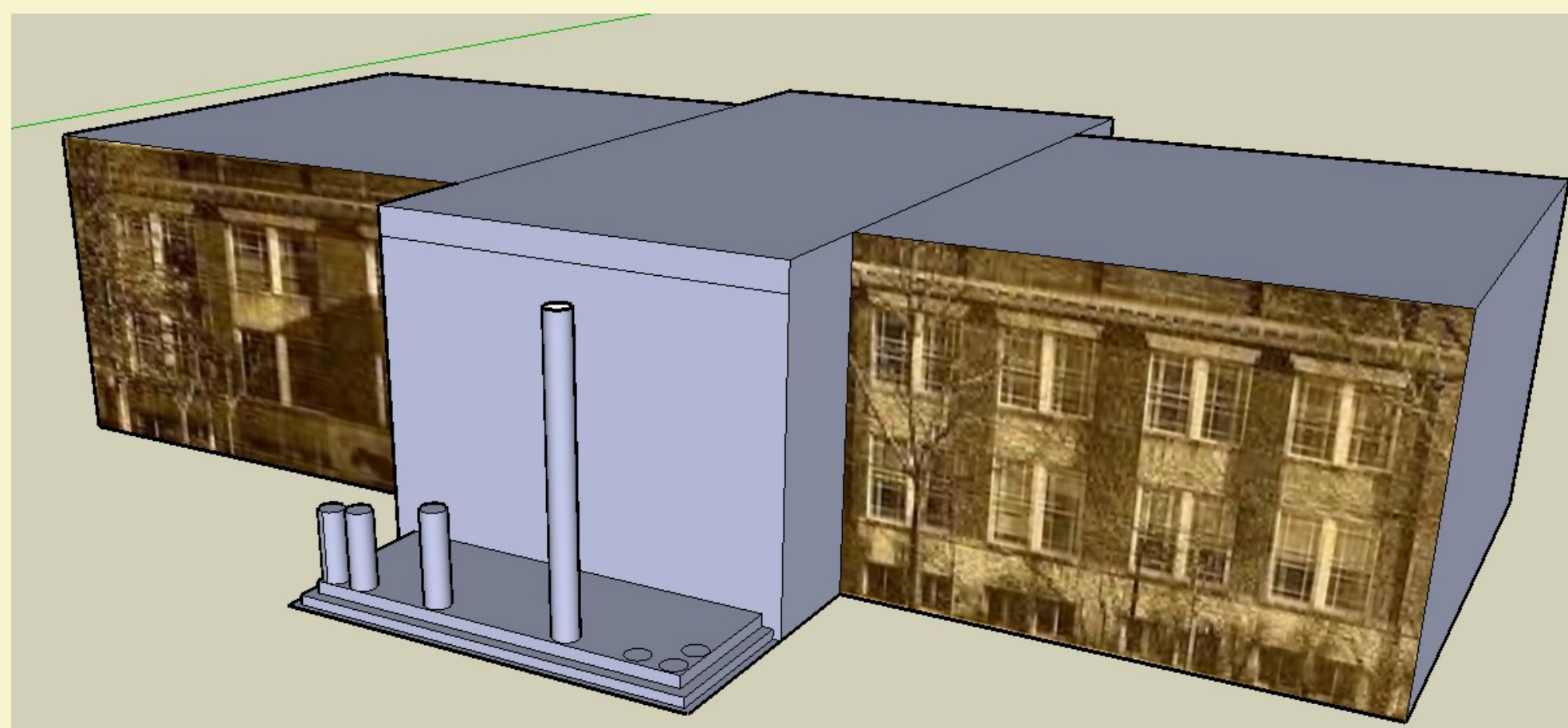
We used the 1927 Sanborne Map inserted into AutoCAD to trace the building footprints. This gave us the exact positions of the buildings in relation to each other. AutoCAD made it easier for our next step: drawing the 3-D model in Google Sketch Up.



### Section of Monroe Hall

Next we imported photographs of the interior of the buildings that focus on student life. Some examples of the photographs include students studying, swimming in the indoor pool, and performing in the dramatic arts.

After completing the models for each building, we added animations in order to insert the file into a movie format. The animations showcased the exterior and the interior of the buildings. By creating an animation of a 3-D model, it makes the audience feel as if they were actually on the campus during the era of 1908—1925.



### Drawing the 3-D Models in Google Sketch Up